

THE CARDINAL RULE

THREE TOOLS, LIMITLESS POSSIBILITIES

THE ORIGINAL CARDINAL CUTTER: VERSATILITY MARRIED WITH EFFICIENCY



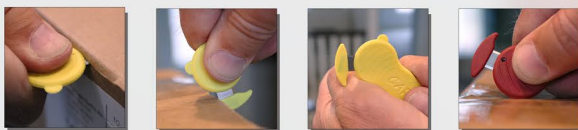
Part #: C-101R, C-101Y
C-101R-S/S, C-101Y-S/S (stainless steel)

Made of recyclable plastic, this lightweight and efficient tool comes with your choice of carbon or stainless steel blades. The proper blade angle maintains integrity of the blades while dual safety guards protect the edges, making it practically impossible to injure yourself or others and earning the Cardinal Cutter the highest level of safety.



THE CARDINAL DUO: INNOVATIVE DESIGN WITH DUAL BLADE APPLICATION

The Duo's innovative, double-edged blade design allows for two methods of pull and push cutting. Its compact form factor and dual functionality make it adaptable to any situation. Made of lightweight, recyclable plastic, this tool is available in your choice of carbon or stainless steel blades.



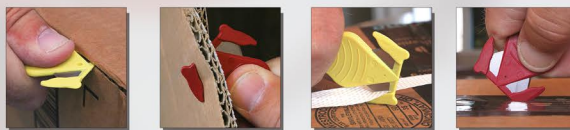
Part #: C-102R, C-102Y
C-102R-S/S, C-102Y-S/S (stainless steel)

THE CARDINAL PRO: PROFESSIONAL-GRADE MATCHED WITH HIGH PERFORMANCE



Part #: C-103R, C-103Y

The Cardinal Pro is ideal for applications which require precision and speed in a safety cutter. This smart, effective, and fully recyclable tool packs a lot of cutting power in an ergonomic package. Angled blades reduce the potential for binding and the lightweight, contoured handle is designed for enhanced comfort and productivity.



The Cardinal Recycling Program: Reduce, Reuse, Recycle

At Cardinal Safety, we're committed to limiting the use of natural resources, preventing pollution, and saving energy, which is why we designed all Cardinal products to be completely recyclable. Simply apply the included return label and we'll take care of the rest.



CARDINAL SAFETY CO.

A Cut Above The Rest

CONTACT US:

16110 Coventry Lane, Spring Lake, MI 49456

Email: Info@cardinalsafetyco.com

Office: 1-616-935-7208

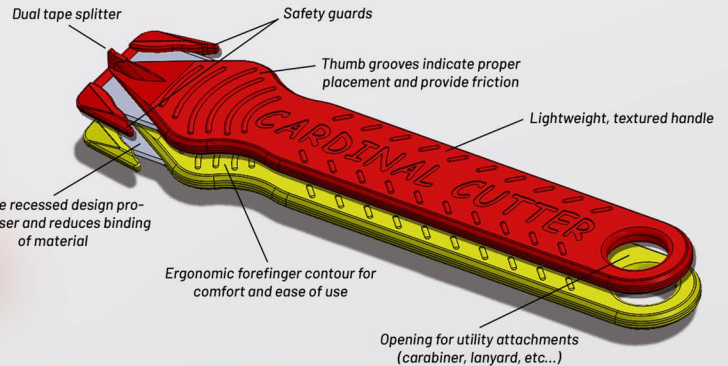
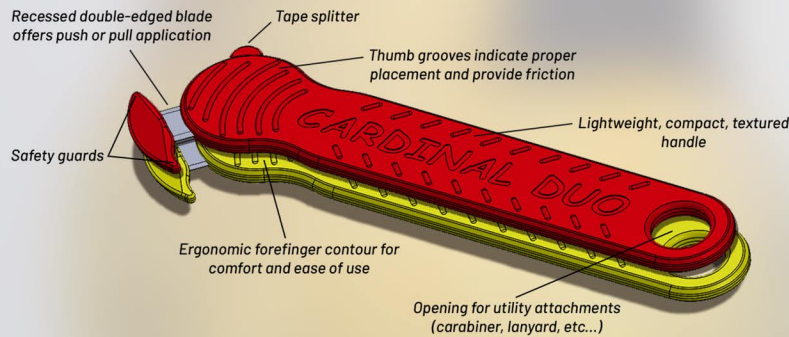
Fax: 1-616-935-7008



THE CARDINAL COLLECTION AT A GLANCE

THE CARDINAL CUTTER

- Safety guards greatly reduce likelihood of injury and damage to package contents.
- Camber or tilt the cutter according to the situation for efficient use and preservation of the blades' integrity.
- The dual tape splitter extends the longevity of the blades' edge.

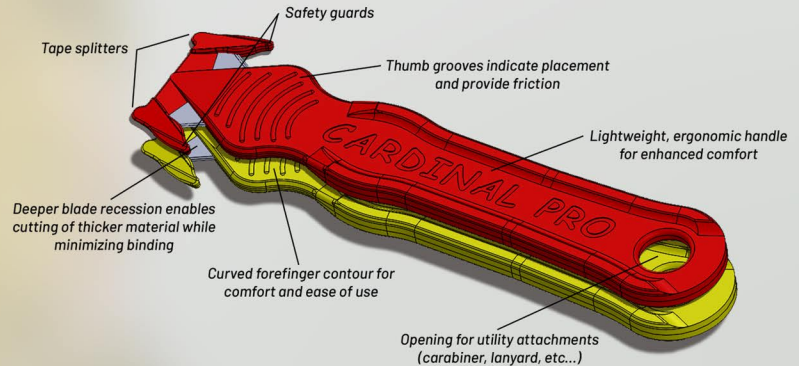


THE CARDINAL DUO

- Dual blade design increases efficiency with two styles of push or pull cutting.
- Smaller, lightweight handle maintains durability while allowing for multiple cutting angles and versatility within tight spaces.
- Like the Cutter, the Duo is available in your choice of carbon or stainless steel blades.

THE CARDINAL PRO

- This cutter is ideal for heavy duty applications while retaining functional capabilities of both the Cutter and the Duo.
- The deeper recession of the blades' design enables effortless cutting of thicker materials.
- The professional-grade and high performance safety cutter, built for any application.



HANDY TIPS FOR CARDINAL CUTTING

- Always cut banding on an angle leading away from your person.
- Utilise the included tape splitters for simpler tasks, ensuring product safety and prolonging the life of the blade.
- Camber or tilt the cutter for maximum efficiency and precision when cutting.
- Always use caution when using our cutters, regardless of the application.

- These products are safety cutters, but always be mindful that they contain sharp, professional-grade blades.
- Keep your non-cutting hand out of the path of the blade and be aware of your immediate surroundings when cutting to avoid distraction and injury.
- DO NOT push or pull with excessive force as this may damage the tool and lead to personal injury.
- Abuse or misuse of these products could lead to exposure of the blade, increasing the potential for personal injury - ONLY use our products as intended and advertised.

 **CAUTION**

THE CARDINAL ADVANTAGE

Interested in learning more about our company, our products, and our services? We invite you to visit our website at www.cardinalsafetyco.com by scanning the QR Code to the right. Here, you can view more detailed information on our products and our recycling program, as well as access additional resources provided for your convenience. You may also contact us at info@cardinalsafetyco.com regarding sample requests or any other inquiries you may have - We are happy to accommodate any of your cutting needs!

